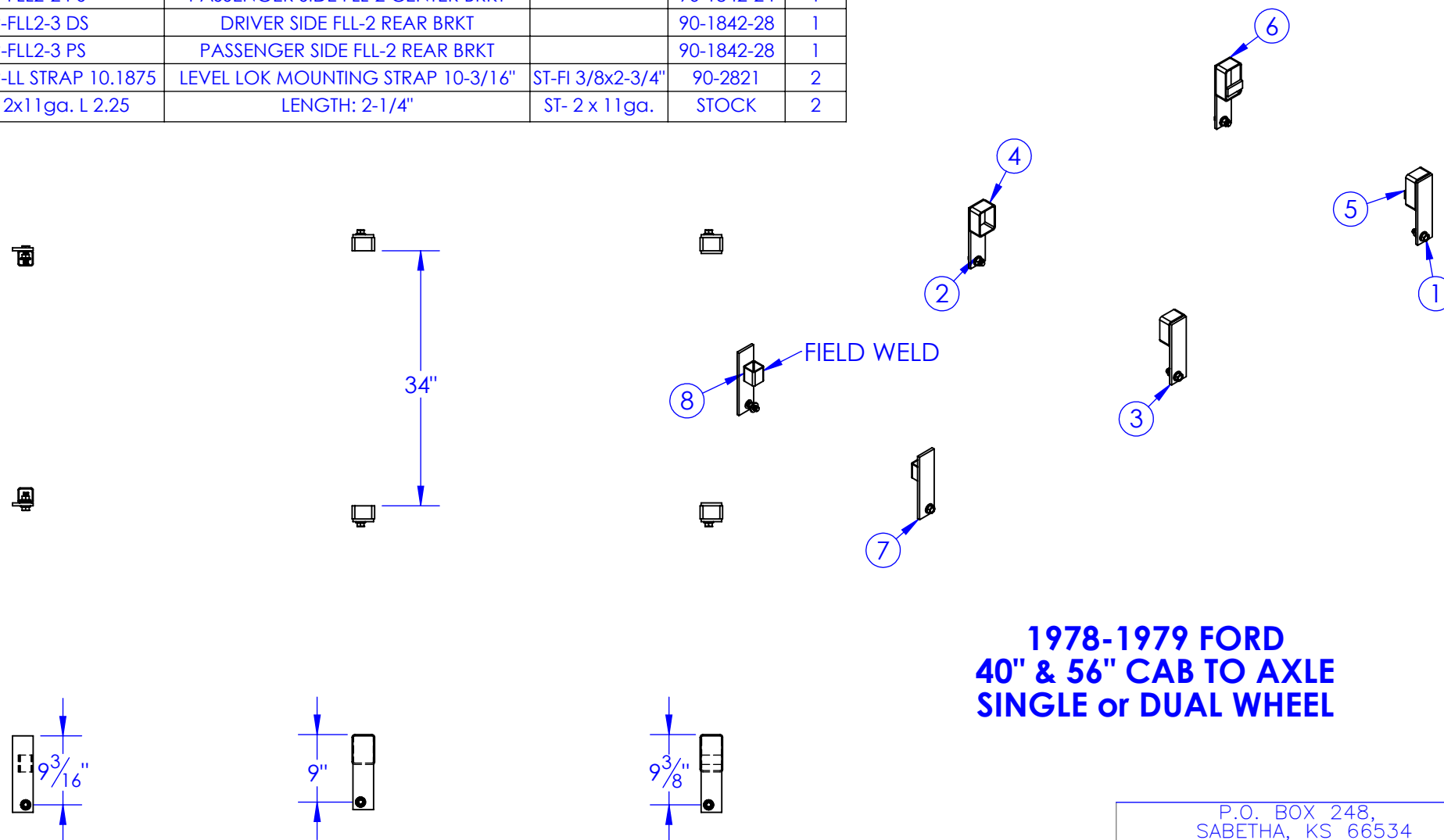


ITEM NO.	PART NUMBER	DESCRIPTION	MATERIAL	DRAWING #	QTY.
1	BO-5/8x1-3/4 FLHCS	FLANGE HEAD BOLT 5/8x1-3/4"		STOCK	6
2	BO-5/8 HNN	LOCK NUT 5/8		STOCK	6
3	FP-FLL2-2 DS	DRIVER SIDE FLL-2 CENTER BRKT		90-1842-24	1
4	FP-FLL2-2 PS	PASSENGER SIDE FLL-2 CENTER BRKT		90-1842-24	1
5	FP-FLL2-3 DS	DRIVER SIDE FLL-2 REAR BRKT		90-1842-28	1
6	FP-FLL2-3 PS	PASSENGER SIDE FLL-2 REAR BRKT		90-1842-28	1
7	FP-LL STRAP 10.1875	LEVEL LOK MOUNTING STRAP 10-3/16"	ST-FI 3/8x2-3/4"	90-2821	2
8	ST 2x11ga. L 2.25	LENGTH: 2-1/4"	ST- 2 x 11ga.	STOCK	2

REV.	REVISIONS	DESCRIPTION	DATE	APPROVED
A		UPDATED FROM 10-1824	1/28/2013	



**1978-1979 FORD  
40" & 56" CAB TO AXLE  
SINGLE or DUAL WHEEL**

**PROPRIETARY AND CONFIDENTIAL**  
THE INFORMATION CONTAINED IN THIS  
DRAWING IS THE SOLE PROPERTY OF TRIPLE  
C INC. ANY REPRODUCTION IN PART OR  
AS A WHOLE WITHOUT THE WRITTEN  
PERMISSION OF TRIPLE C INC. IS PROHIBITED.

DIMENSIONS ARE IN INCHES TOLERANCES: FRACTIONAL $\pm 1/16$ ANGULAR: MACH $\pm 1$ BEND $\pm$ TWO PLACE DECIMAL $\pm 0.10$ THREE PLACE DECIMAL $\pm 0.005$	
MATERIAL	--
DO NOT SCALE DRAWING	

NAME	DATE
DRAWN <b>HEATH</b>	1/28/2013
PART # <b>LL-FLL-2</b>	
ASM #	
COMMENTS:	
<b>FORD LEVEL LOK TYPE # 2</b>	

P.O. BOX 248, SABETHA, KS 66534	
<b>TRIPLE C</b> INC.	
SIZE <b>A</b>	DWG. NO. <b>90-1842</b>
SCALE: 1:20	WEIGHT: 24.71
SHEET 1 OF 1	

REV.  
**A**

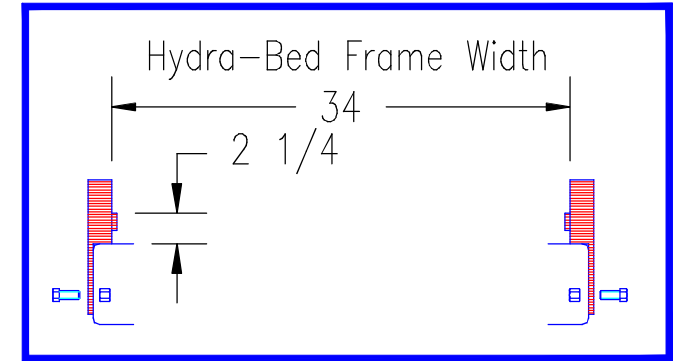


## GENERAL INSTRUCTIONS AND CAUTIONS

Note: When welding, attach welder ground only to Hydra-Bed, not to truck frame. Use low-hydrogen rod or wire electrode. NEVER weld to the frame of the truck. Correct installation of the Level-Lok system assures Front to Rear and Side to Side leveling as well as Left to Right centering of the Hydra-Bed. Never obstruct factory overload spring mounting locations.

When drilling truck frame, do not damage any part of the braking, fuel or electrical systems.

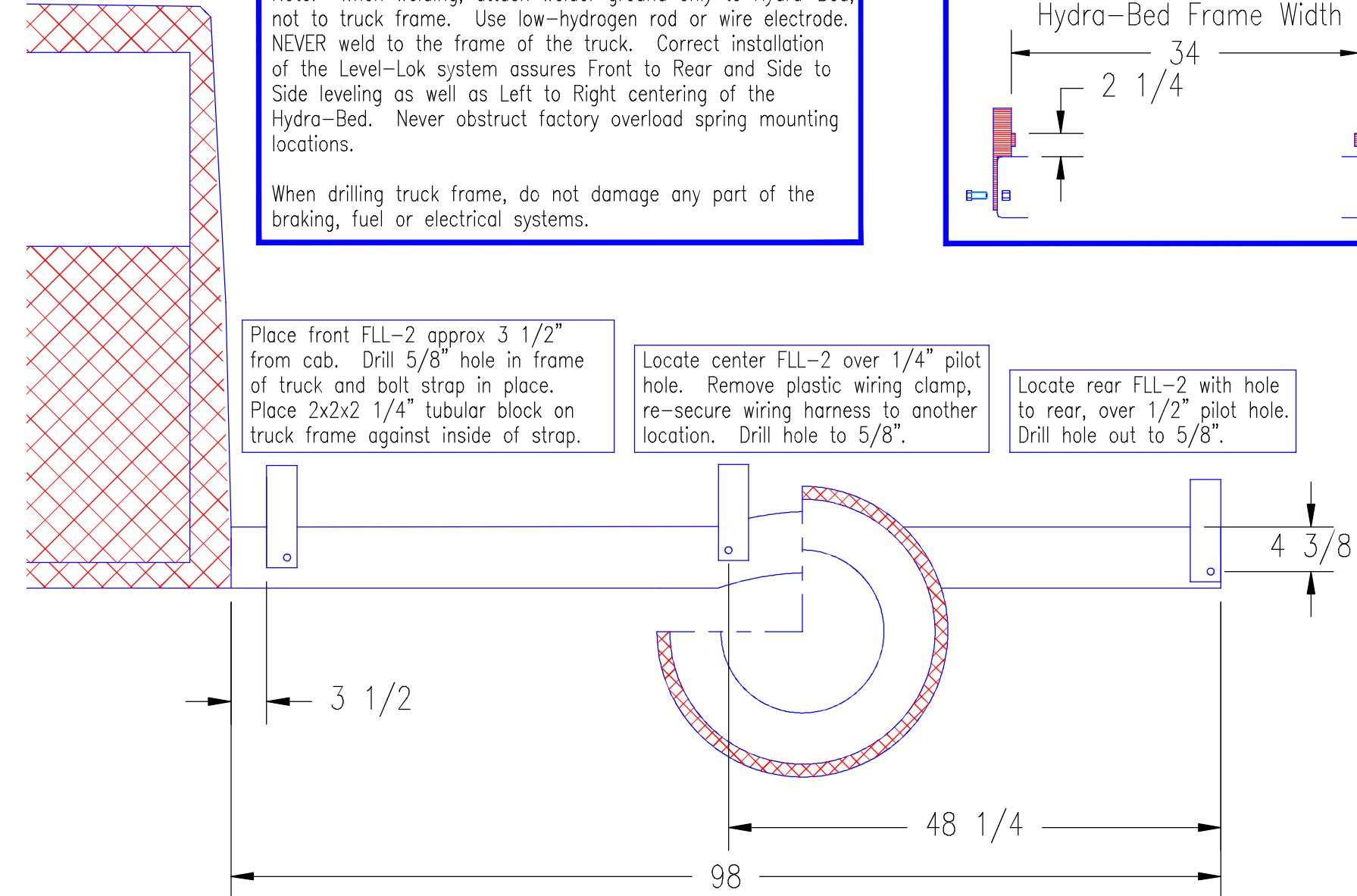
## VIEW OF REAR LEVEL-LOK ON TRUCK FRAME



Place front FLL-2 approx 3 1/2" from cab. Drill 5/8" hole in frame of truck and bolt strap in place. Place 2x2x2 1/4" tubular block on truck frame against inside of strap.

Locate center FLL-2 over 1/4" pilot hole. Remove plastic wiring clamp, re-secure wiring harness to another location. Drill hole to 5/8".

Locate rear FLL-2 with hole to rear, over 1/2" pilot hole. Drill hole out to 5/8".



FLL-2

1978-1979 Ford  
56" Cab to Axle Single/Dual Wheel